


1980 Honda Accord





The introduction of the Accord 4-Door Sedan was a momentous occasion for Honda. It marked the first time we had ever offered a sedan with four doors and a conventional trunk.

The four doors and the trunk aren't the only new items on the car. It offers an unprecedented degree of passenger room and comfort for a Honda.

The 4-Door Accord sacrifices none of the engineering benefits of the other Accords. The wheelbase is no longer



ACCORD 4-DOOR SEDAN



than the Accord Hatchback's, giving it the same tight turning circle (32.9 feet).

The Accord 4-Door Sedan has advanced power steering. When the car is stationary, or moving slowly, this variable-assist power steering system provides maximum assist, making it simple to park. Yet at highway speeds, the power assist is minimal, improving your feel of the road.

The protective side mouldings you see come standard, as do both the front and rear splash guards.



HONDA



The trunk is quite spacious. A trunk light automatically lights up whenever the trunk is opened. The two storage boxes in the sides keep smaller items from rattling around and make them easier to find.

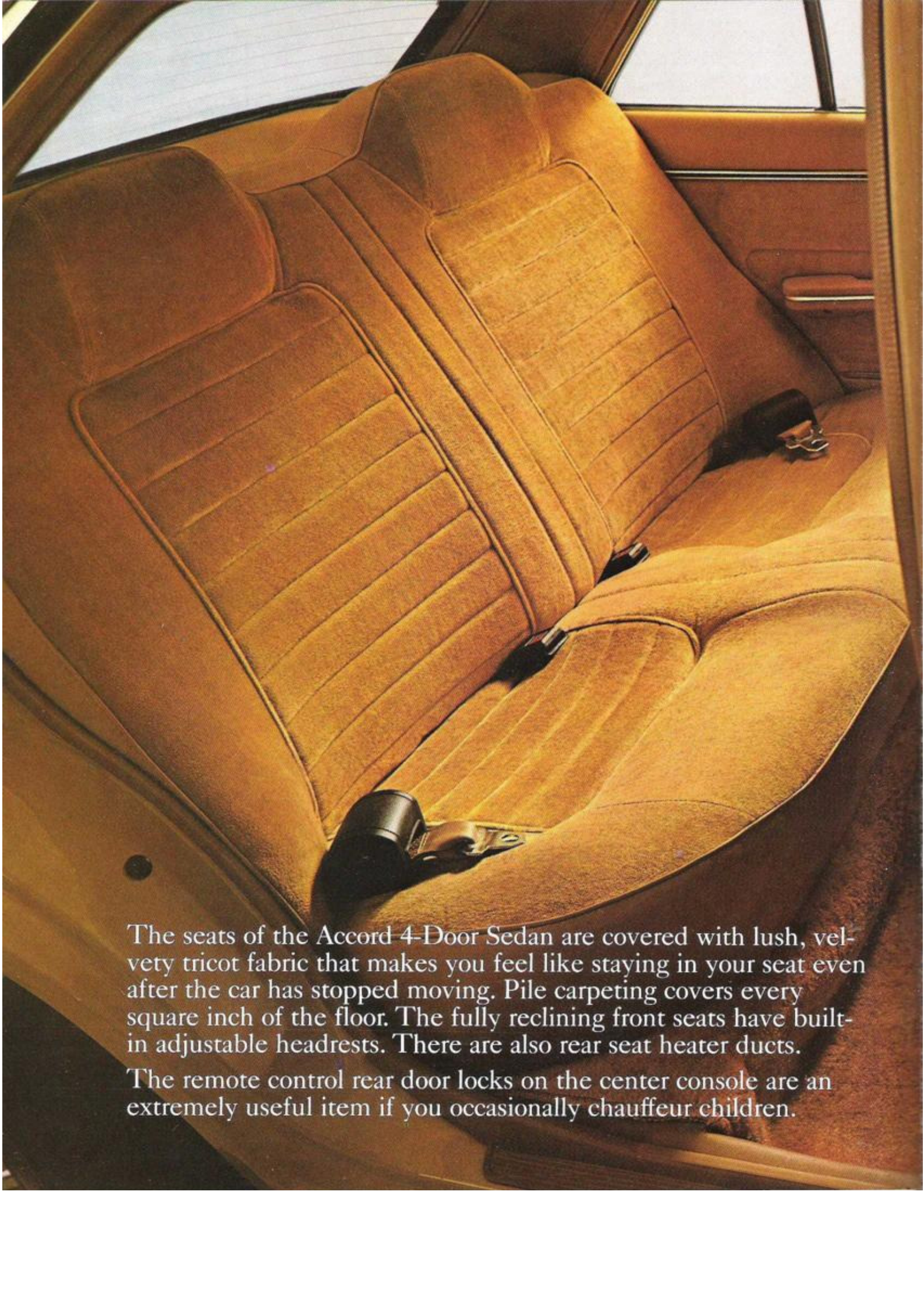
For added convenience we've even provided a remote trunk lid release by the base of the driver's seat.

The styling for the Accord 4-Door Sedan remains basically unchanged from last year. We have tried to keep it as simple as possible (something we are always striving to do at Honda).

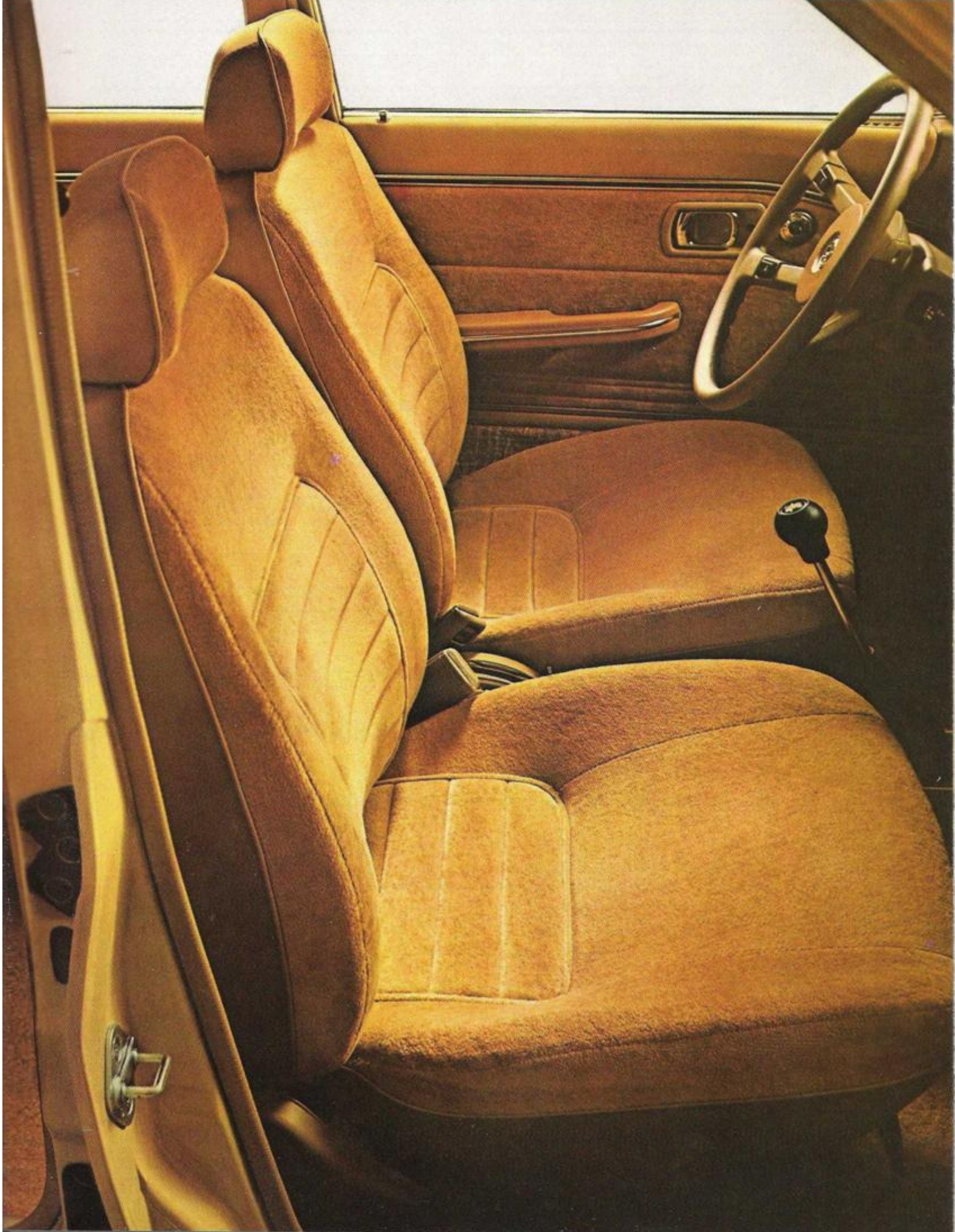
ACCORD



ACCORD 4-DOOR SEDAN

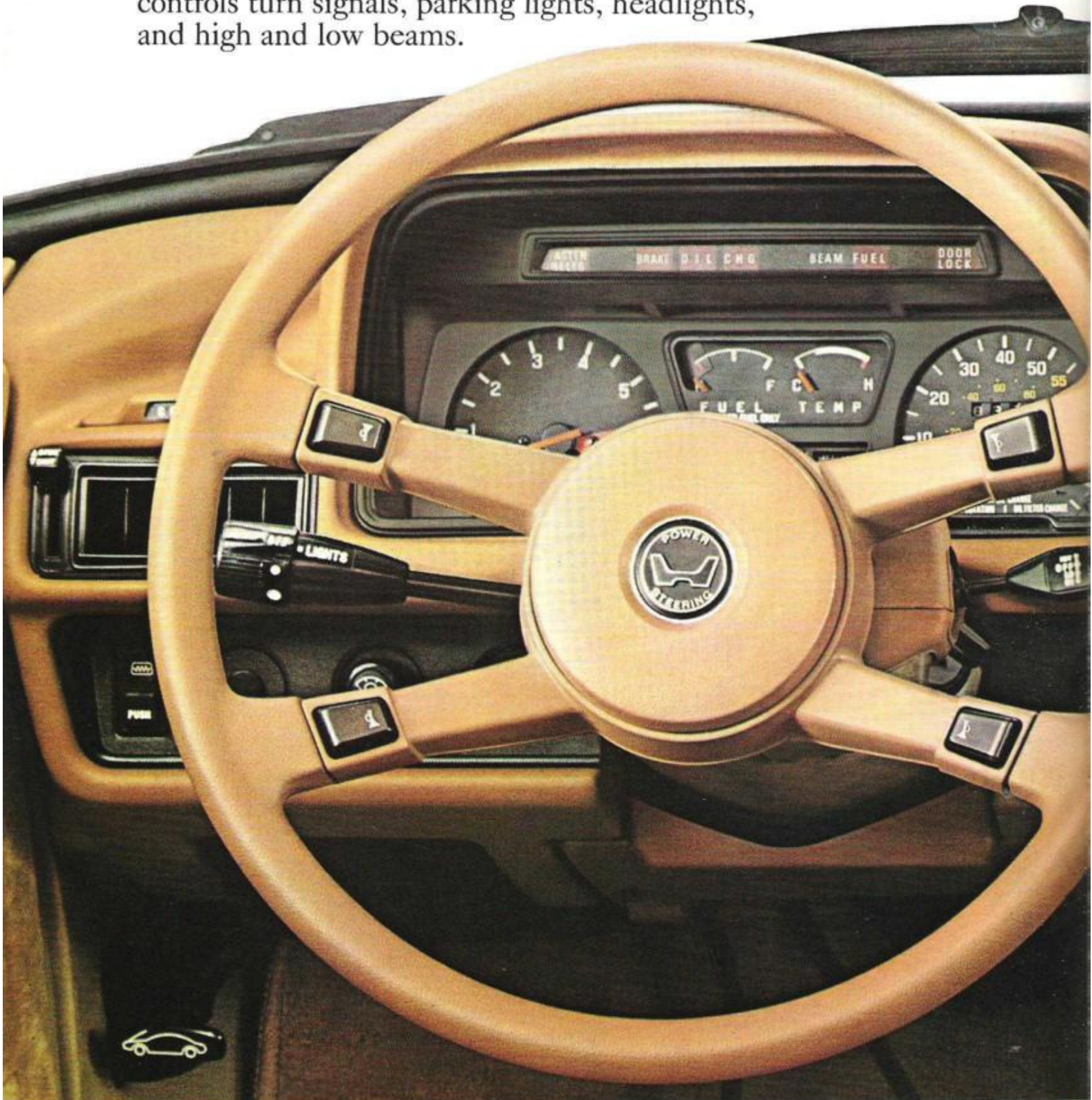
A high-angle, close-up photograph of the front passenger seat in a car. The seat is upholstered in a rich, golden-brown velvety fabric with a distinct ribbed or tufted pattern. The seat is shown from a three-quarter perspective, highlighting its contours and the texture of the material. The surrounding interior, including the door panel and floor area, is also finished in a matching color and material. The lighting is warm, emphasizing the softness of the fabric.

The seats of the Accord 4-Door Sedan are covered with lush, velvety tricot fabric that makes you feel like staying in your seat even after the car has stopped moving. Pile carpeting covers every square inch of the floor. The fully reclining front seats have built-in adjustable headrests. There are also rear seat heater ducts. The remote control rear door locks on the center console are an extremely useful item if you occasionally chauffeur children.



The Accord 4-Door Sedan comes with a stunning array of standard equipment. Quartz electric clock. Cigarette lighter. Lighted ashtrays. Vanity mirror. Tachometer. And a trip odometer, a handy little device which allows you to measure trip length.

The combination light switch on the steering column controls turn signals, parking lights, headlights, and high and low beams.



With the exception of the AM/FM stereo cassette and the air-conditioning unit, both of which are optional, what you see is what you'll get. And that's quite a bit.

Voilà. The Accord 4-Door Sedan, our newest addition to the Accord line. Not only is it simplicity made bigger. It's simplicity made better.



When we introduced the Accord LX in 1978, we called it simply luxurious. In many ways, it symbolized the coming of age of the economy car. The ideal blend of common sense and comfort.

For 1980, the Accord LX has the kind of common sense it had in 1978. And it's even more luxurious. This year new features include a side rearview mirror with remote control. Soft grip steering wheel. And a soft vinyl shift knob.

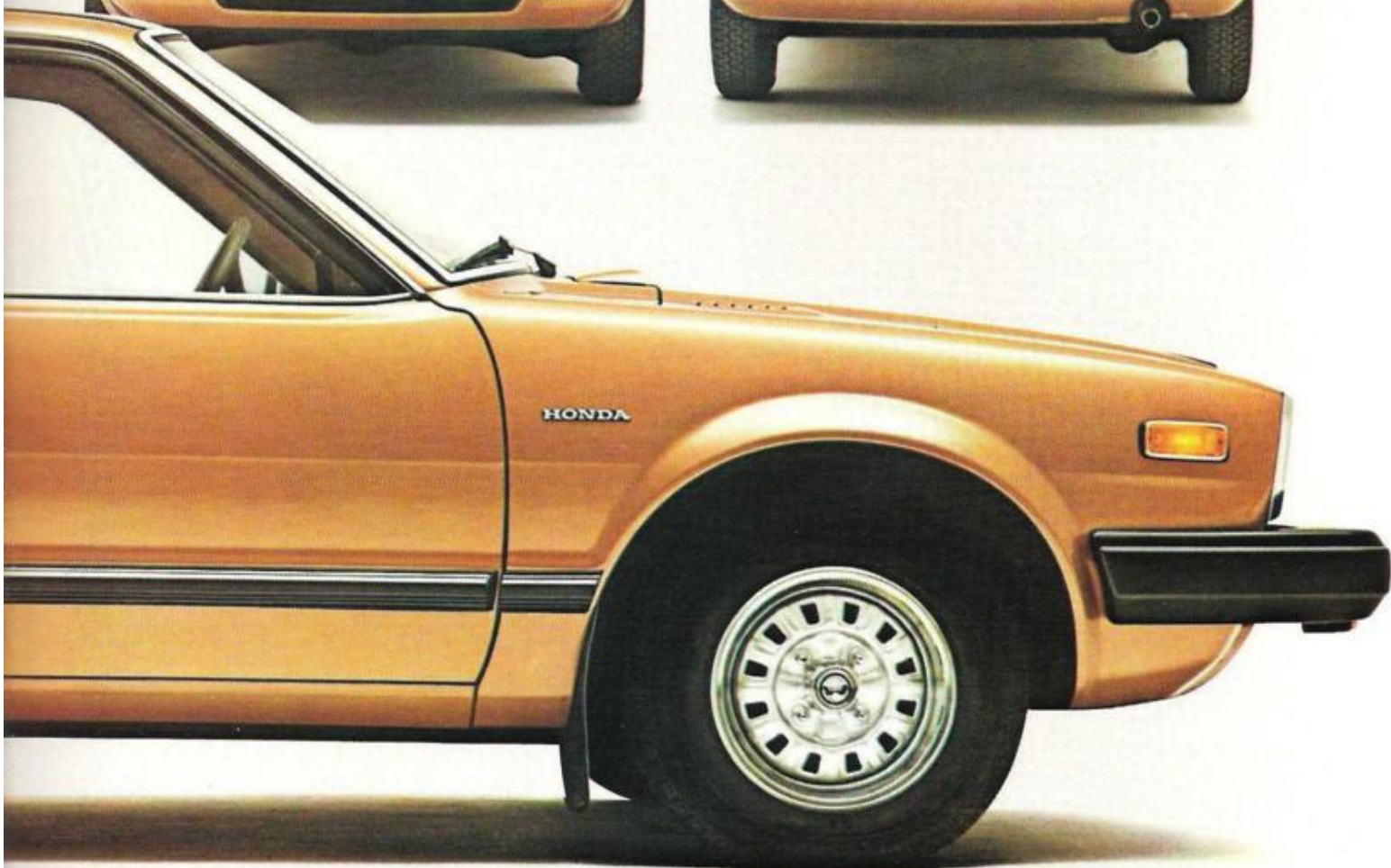
If you doubt the legitimacy of the LX's claim to luxuriousness, consider the following. Air conditioning. Quartz digital clock. Coin box. Trip odometer. Two-speed windshield wipers with intermittent action. Rear window wiper and washer. Door and rear window defrosters. Michelin steel-belted radial tires. Variable assist power steering.

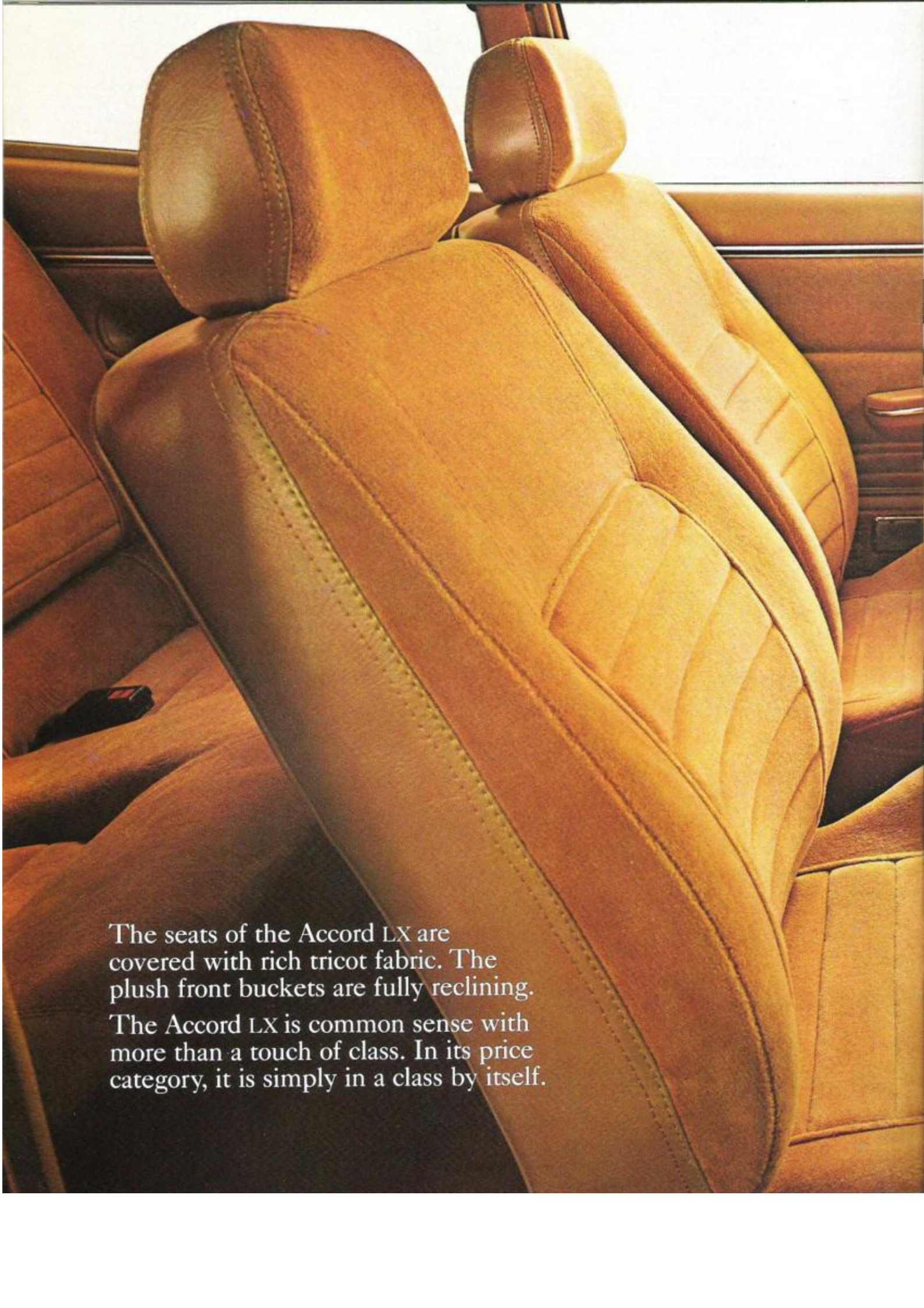


ACCORD LX

Remote control hatch release. Tonneau cover. Full carpeting. Tinted glass all around. And stowage boxes in the rear seat side panels. All standard.

The Accord LX has a counterbalanced hatch which opens onto a spacious cargo area.





The seats of the Accord LX are covered with rich tricot fabric. The plush front buckets are fully reclining. The Accord LX is common sense with more than a touch of class. In its price category, it is simply in a class by itself.



When the Accord Hatchback was introduced in 1976, it immediately became one of the most popular cars in America. Four years later, the public's enthusiasm has not dimmed.

It's not hard to explain why. The Accord has the kind of engineering that other cars in its price category can only try to imitate.

Like the 4-Door Sedan and the LX, it has Honda's famous CVCC® Advanced Stratified Charge Engine. It also has front-wheel drive for better traction. Rack and pinion steering. Four-wheel independent suspension. Power-assisted front disc brakes with dual-diagonal circuits.

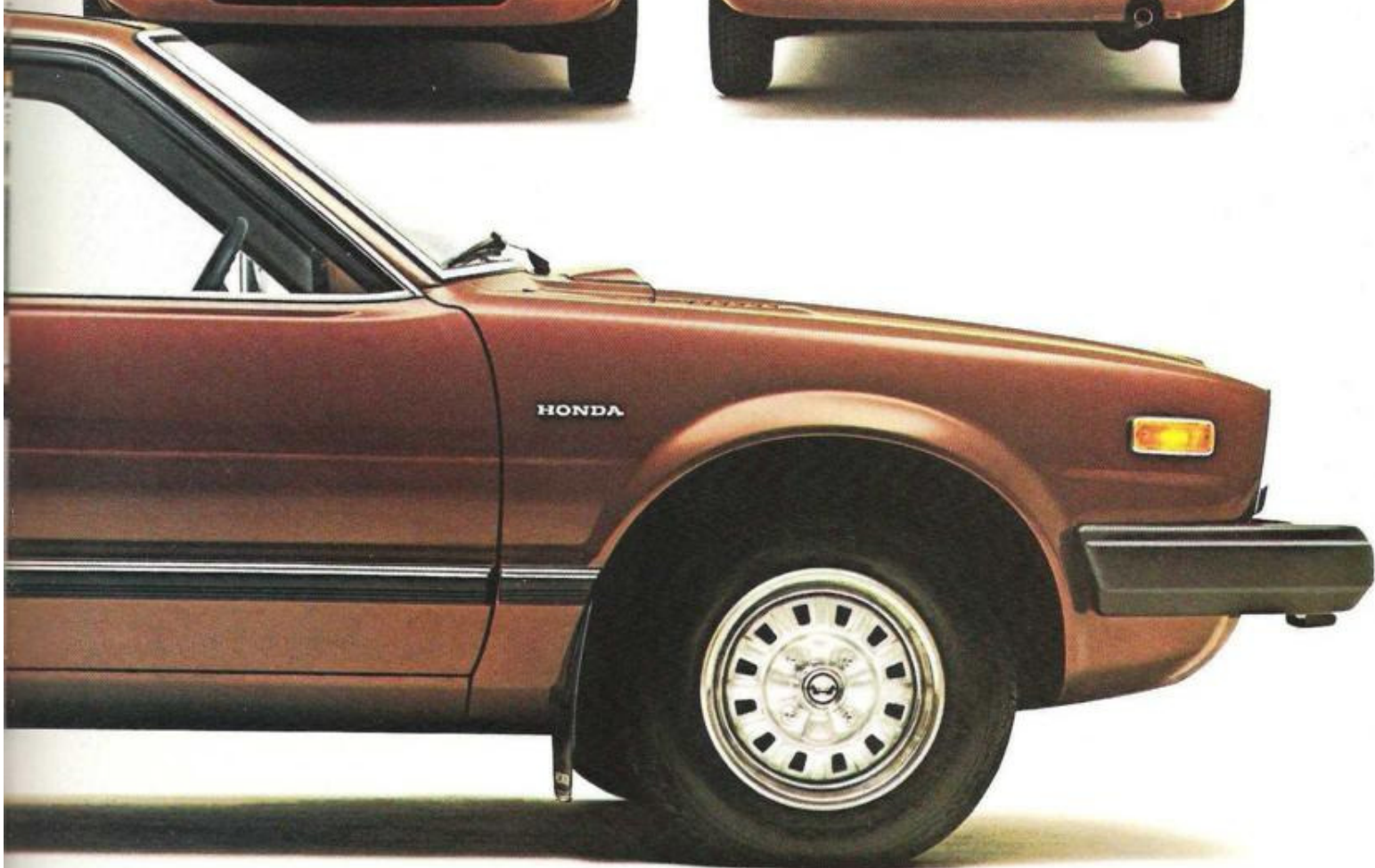
This year all three Accords are available with a brand-new, 3-speed fully automatic transmission as optional equipment.

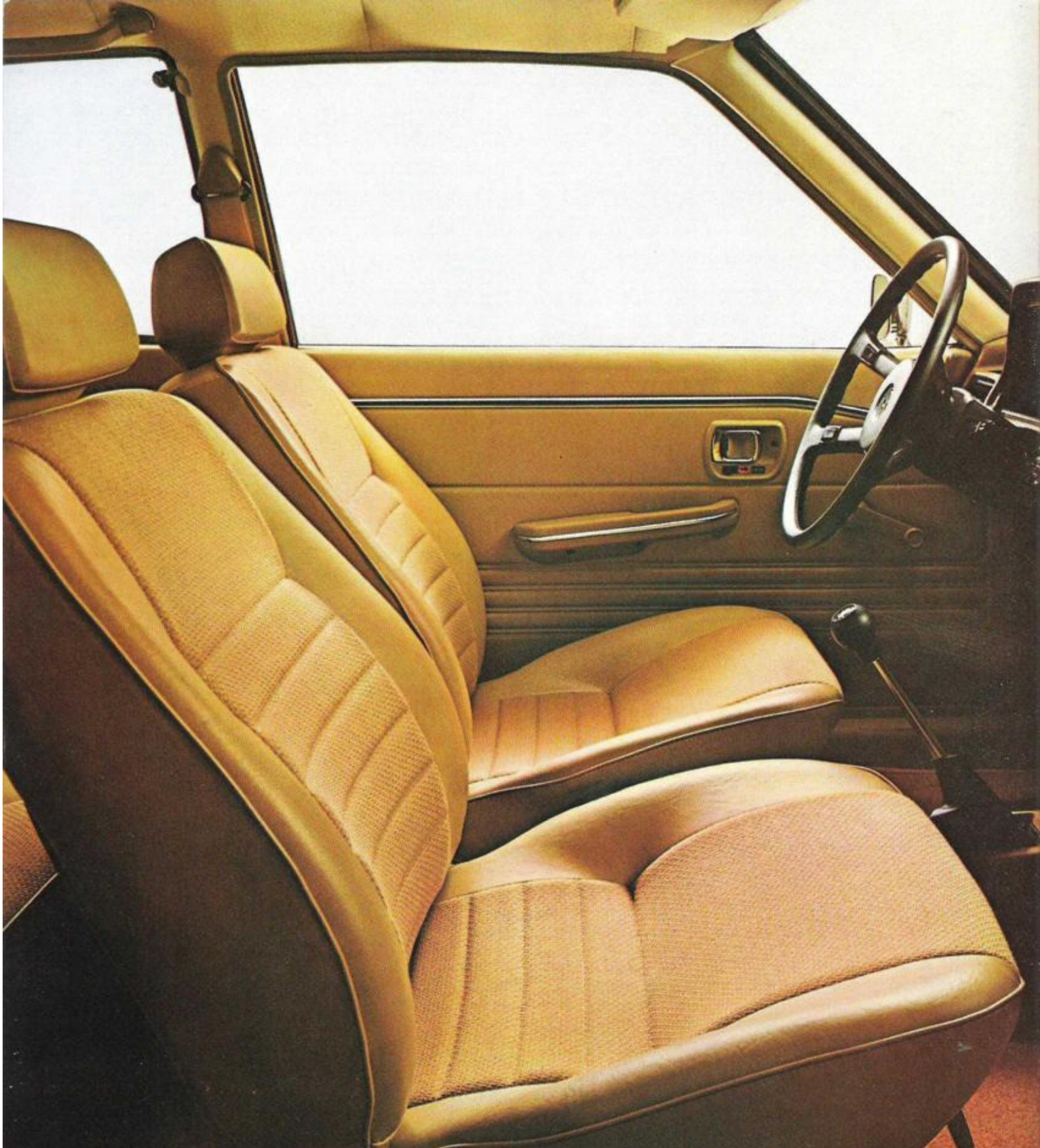


ACCORD

The Accord Hatchback has steel-belted radial tires. Quartz electric clock. Two-speed wipers with intermittent action. Front door and rear window defrosters. Rear window washer and wiper. Trip odometer. Coin box. Protective side mouldings. And on and on.

For the potential car buyer, the Honda Accord offers a distinct advantage. It's a Honda.





The Accord Hatchback has a spacious, comfortable interior. There are tricot fabric seats with vinyl trim.

Standard Features	Accord		
	Accord	4-Door Sedan	Accord LX
Air Conditioning		X	X
Power Steering		X	X
Tachometer	X	X	X
Maintenance Reminder	X	X	X
Trip Odometer	X	X	X
Low-Fuel Warning Light	X	X	X
Quartz Digital Clock			X
Quartz Clock	X	X	
Electronic Warning System	X	X	X
Remote Control Outside Mirror		X	X
Day/Night Rearview Mirror	X	X	X
Vanity Mirror—R. Sun Visor	X	X	X
Glove Compartment Light	X	X	X
Coin Box with Lid	X	X	X
Two-Speed Plus Intermittent Wipers	X	X	X
Front Side Window Defrosters	X	X	X
Rear Window Defroster	X	X	X
Rear Window Wiper/Washer	X		X
Tinted Glass	X	X	X
Opening Rear Quarter Windows	X		X
Reclining Front Bucket Seats with Adjustable Headrests	X	X	X
Rear Seat Built-in Headrests		X	
Full Carpeting	X	X	X

Standard Features	Accord		
	Accord	4-Door Sedan	Accord LX
Combination Light Switch on Steering Column	X	X	X
Built-in Front Seatbelt Retractors	X	X	X
Remote Hatch or Trunk Lid Release	X	X	X
Automatic Trunk or Cargo Area Light	X	X	X
Cigarette Lighter	X	X	X
Lighted Ashtray—Rt. Front Door	X	X	X
Lighted Ashtrays—Rear Doors		X	
Remote Control Rear Door Locks		X	
Special Heater Ducts to Rear Seat		X	
Tonneau Cover			X
Stowage Boxes in Rear Seat Side Panels	X		X
Stowage Box in Center Console		X	
Stowage Box Each Side of Trunk		X	
Protective Body Side Mouldings	X	X	X
Bright Metal Wheel Trim Rings	X	X	X
Passenger Assist Handle—Rt. Front and Both Sides Rear Compartment	X	X	X
Front Wheel Splash Guards	X	X	X
Rear Wheel Splash Guards		X	
Front Fender Rust Protectors	X	X	X
Tricot Fabric Interior Trim		X	X

Specifications	Accord	Accord 4-Door Sedan	Accord LX
General	Front-Wheel Drive, Transverse Engine, Unitized Body		
Engine-Type*	CVCC® Advanced Stratified Charge, 4-Cylinder, Overhead Camshaft		
Piston Displacement	1751cc		
Compression Ratio	8.0:1		
Net Horsepower	72 @ 4500 rpm (68 @ 4500 rpm with Automatic Transmission)		
Net Torque (lb.-ft.)	94 @ 3000 rpm (94 @ 2500 rpm with Automatic Transmission)		
Fuel Tank Capacity	13.2 gals.		
Type Ignition	Electronic		
Fuel Requirement	Unleaded		
Transmission-Types			
Standard	5-Speed Manual		
Optional-Extra Cost	3-Speed Fully Automatic		
Suspension-Type			
Front & Rear	4-Wheel Independent MacPherson Struts		
Steering-Type			
Power Steering—Type	Rack and Pinion		
Steering Wheel Turns—Lock to Lock	Not Available	Variable Assist—Standard Equipment	
Turning Circle—Curb to Curb	3.5	3.0	
		33.8 ft.	
Brakes-Type			
Front	Self-Adjusting, Power-Assisted with Dual-Diagonal Circuits		
Rear	Disc		
	Drum		
Tires-Type			
Size	Steel-Belted Radial—Blackwall		
	165SR13		
Dimensions (inches)			
Length	163.2	171.9	163.2
Width		63.8	
Height	52.6	53.3	52.6
Wheelbase		93.7	
Tread—Front/Rear		55.5/55.1	
Approx. Curb Wts. (lbs.)			
Manual Transmission	2129	2239	2229
Automatic Transmission	2145	2255	2245
Color Options			
Exterior Paint/Interior Trim	St. Moritz Silver†/Red Livorno Beige/Tan Catherine Brown†/Tan	Tudor Red†/Red Livorno Beige/Tan Hampstead Green†/Green	Tudor Red†/Red Longleat Gold†/Tan Hampstead Green†/Green

*Models with automatic transmission sold in California are equipped with catalytic converter.

†Metallic colors

©1979 American Honda Motor Co., Inc.

Accessories, materials, equipment, colors, models, specifications and availability are subject to change without notice. Colors may vary from those shown.

Z0602

H O N D A

We make it simple.